

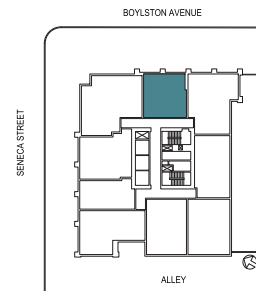
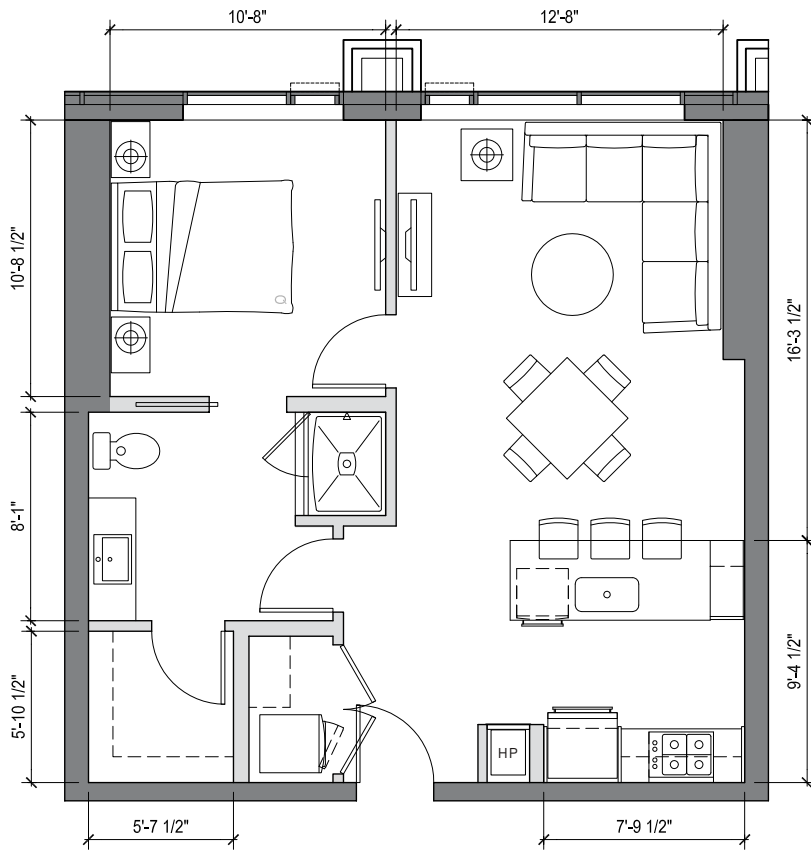


HOME # 202

INTERIOR SQ FT: 720 SF  
EXTERIOR SQ FT:

HOME TYPE: ONE BEDROOM,  
ONE BATH

- » Gracious entry into open living area
- » Kitchen includes island with bar seating for 3 and pantry
- » Spacious master suite with walk-in closet
- » Light-filled home with exceptionally large windows
- » Dual access master bath
- » East facing territorial view



1321 SENECA STREET  
SEATTLE, WA 98101

206.749.LUMA (5862)  
INFO@LIVELUMA.COM

LIVELUMA.COM



Any representation as to square footage is approximate. The square footage or floor areas shown in any marketing or other materials may be more or less than the actual size and square footage of the residential unit, common area, or any other portion of the project. The developer/seller reserves the right to change features, amenities and pricing without notice. Renderings, photography, illustrations, floor plans, amenities, finishes and other information described herein are representative only and are not intended to reflect any specific feature, amenity, unit condition or view when built. The actual condition of the project, amenity or unit, when and if completed, will control. The improvements and amenities depicted are proposed only and need not be built. There is no representation or warranty that any particular improvement or amenity will be constructed or constructed as shown. No representations and warranties are made with regard to the accuracy, completeness or suitability of the information published herein. Obtain the Property Report Required by Federal law and read it before signing anything. No Federal agency has judged the merits or value, if any, of this property.

